

K-2. More Spring Poems. Ladybug. Directions. Print out. Read the poem. Color the picture. Underline the rhyming words. Write the rhyming words on the pages 2-4. Study the definition.

p.1.

NAME _____

Ladybug

Polka-dot lady in the tall grass,

I love to watch you as I pass.

Your black and red coat

Shines in the bright sun,

Like a beautiful sunset

When the day's done.

And then your wings spread

Like the wings of a bird

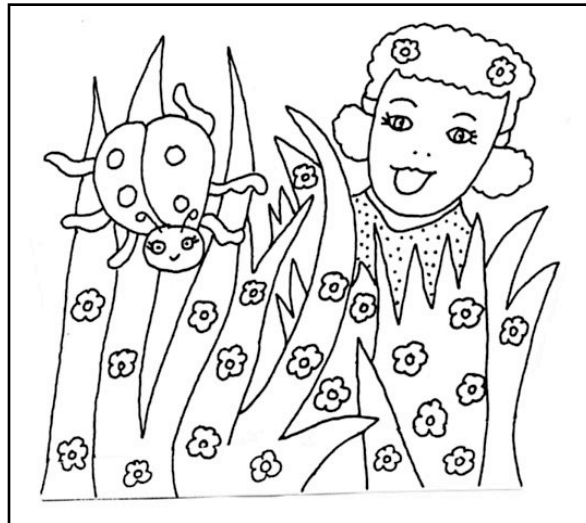
And you fly away, fly away

Without being heard.

Polka-dot lady in the tall grass,

I love to watch you as I pass.

- Ellen Baumwoll (1938-)



ladybug

ladybug - *n.* A small round flying beetle that has red or orange outer wings with black spots. It eats aphids and other insects. Family: *Coccinellidae*. Also called lady beetle, ladybird beetle, and ladybird.

K-2. More Spring Poems. Ladybug. Directions. Print out. Read the poem. Write the rhyming words.

p.2.

NAME _____

Lowercase Print:

g r a s s

p a s s

Uppercase Print:

G R A S S

P A S S

K-2. More Spring Poems. Ladybug. Directions. Print out. Read the poem. Write the rhyming words.

NAME _____

Lowercase Print:

s u n

d o n e

Uppercase Print:

S U N

D O N E

NAME _____

Lowercase Print:

b i r d

h e a r d

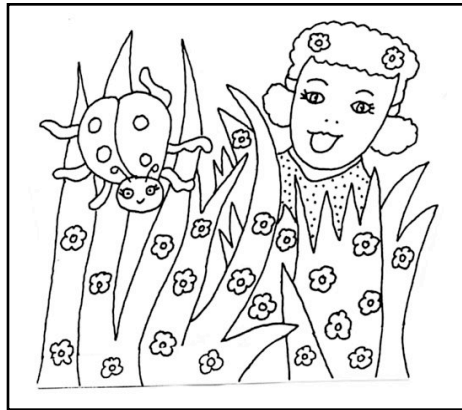
Uppercase Print:

B I R D

H E A R D

K-2. More Spring Poems. **LADYBUG.** Directions. Print out. Color the picture. Write the words. p.5.

NAME _____



Lowercase Print:

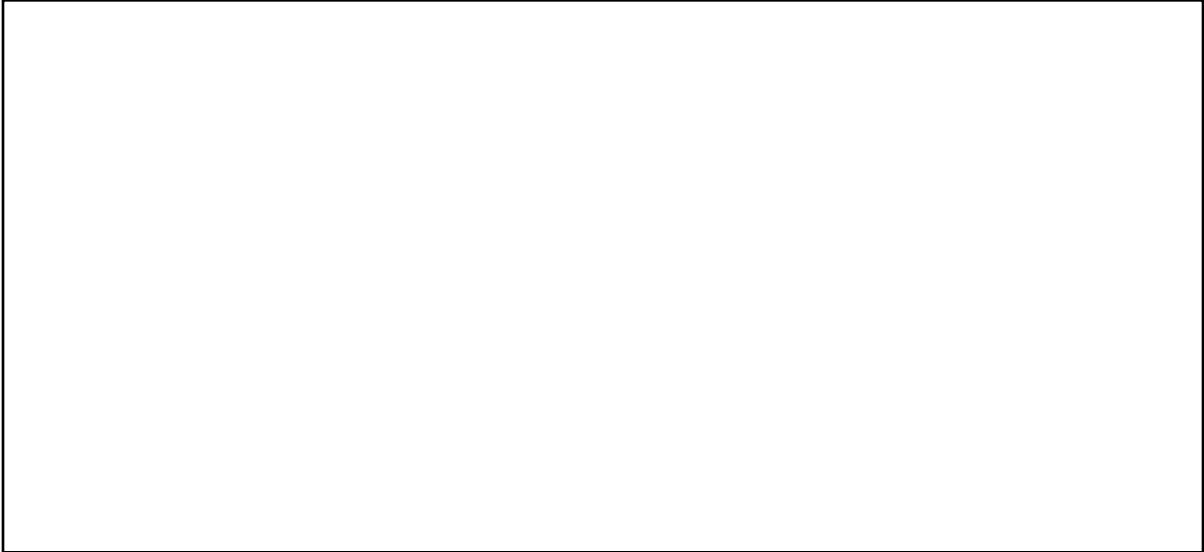
l a d y b u g

Uppercase Print:

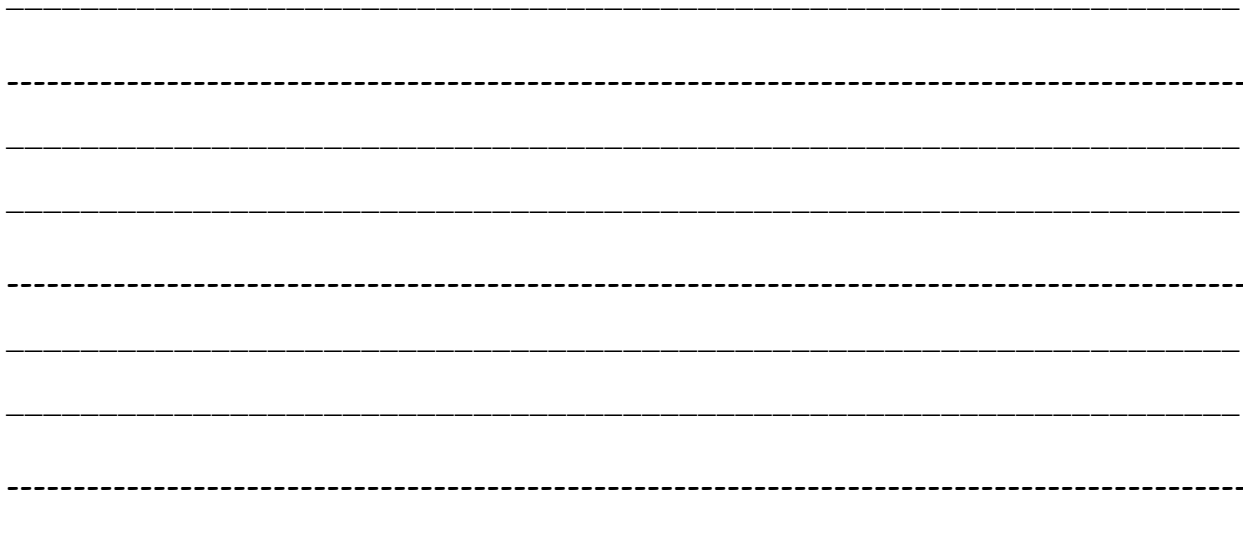
L A D Y B U G

K-2. More Spring Poems. Ladybug. Directions. Print out. Write your own ladybug poem or story. p.6.

NAME _____



TITLE: _____



K-2. More Spring Poems. Brown and Furry. Directions. Print out.

Write your own ladybug poem or story.

p.7.

NAME _____

Handwriting practice lines consisting of solid top and bottom lines with a dashed midline, repeated 10 times for writing.

K-2. More Spring Poems. Ladybug. Directions. Print out. Study the ladybug facts.

p.8.

NAME _____

Ladybug Facts

Ladybugs, called ladybird beetles, belong to a large and varied group of insects. Adults are identified by their peculiar front wings, which are thick hardened covers, and their black spots. When not in flight, these covers protect the thin, folded second pair of under-wings. The main disadvantage of the heavy wing covers is that they are slow in taking flight and therefore make the beetle vulnerable to predators or people. They use their hind wings when they fly.

Ladybugs have the typical triple body division of all insects; head, thorax, and abdomen. Their heads are armed with small biting mouthparts. They like to eat plant-eating aphids, red spider mites, and other small garden pests found on roses, cherry trees, bean plants, and others. They are a friend of the farmer and gardener who like to see them in their fields.